

# **RESOURCE PACKET**

## **Assessment of Speech: Sound Production**



**SPEECH SOUND PRODUCTION SEVERITY RATING SCALE**  
**Determination of Speech Impairment: Articulation**

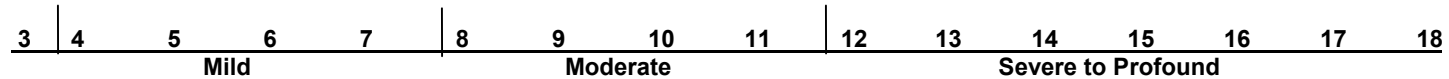
Student \_\_\_\_\_ School \_\_\_\_\_ Grade \_\_\_\_ Date of Rating \_\_\_\_\_ DOB \_\_\_\_\_ Age \_\_\_\_\_ SLT \_\_\_\_\_

Sound Production	<b>0</b> No sound/phonological process errors; errors consistent with normal development	<b>1</b> Sound errors/ phonological processes less than one year below age	<b>3</b> Sound errors/phonological processes one to two years below age	<b>4</b> Sound errors/phonological processes two or more years below age
Stimulability	<b>0</b> Most errors stimulable in several contexts	<b>1</b> Most errors stimulable in at least one context	<b>2</b> Although not correct, most errors approximate correct production	<b>4</b> No error sounds are stimulable for correct production
Oral Motor and/or Motor Sequencing	<b>0</b> Oral motor and/or sequencing adequate for speech production	<b>0</b> Oral motor and/or sequencing difficulties are minimal and do not contribute to speech production problems	<b>3</b> Oral motor and/or sequencing difficulties interfere with speech production	<b>4</b> Oral motor and/or sequencing greatly interfere with speech production, use of cues, gestures or AD needed
Intelligibility	<b>0</b> Connected speech is intelligible	<b>2</b> Connected speech is intelligible; some errors noticeable; more than 80% intelligible	<b>4</b> Connected speech sometimes unintelligible when context is unknown; 50-80% intelligible	<b>6</b> Connected speech mostly unintelligible; gestures/cues usually needed; less than 50% intelligible

**Instructions:**

1. Do not include regional or dialectal differences when scoring.
2. Circle the score for the most appropriate description for each of the four categories, i.e., *Sound Production, Stimulability, Oral Motor, Intelligibility*.
3. Compute the total score and record below.
4. Circle the total score on the bar/scale below.

Note: Disability standards for Phonological Processing require ratings at the Moderate, Severe, or Profound Levels of Severity.



**TOTAL SCORE** \_\_\_\_\_

Based on compilation of the assessment data, this student scores in the *Mild, Moderate* or *Severe* range for Speech Sound Production on the rating scale for Speech Sound Production.

There is documentation/supporting evidence of adverse effects of the Speech Sound Production on educational performance.

- Yes  No  
 Yes  No

*Determination of eligibility as a student with a Speech and/or Language Impairment is made by the IEP Team.*

## ASSESSMENT GUIDELINES FOR SPEECH-SOUND PRODUCTION

### SPEECH SOUND PRODUCTION CONSIDERATIONS

An articulation impairment is the “atypical production of speech sounds...that may interfere with intelligibility” (ASHA, 1993, p. 40). Problems with sound production result from *organic* (a known physical cause) or *functional* (no known physical cause) etiologies. Organically based production errors may be related to Hearing Impairment, cleft lip or palate, cerebral palsy, ankyloglossia (tongue-tie) and others. The accompanying articulation deficits are the direct result of structural or neurologic anomalies and are not developmental in nature. Children with functional sound production problems present with adequate hearing acuity and intellectual abilities. They show no signs of significant structural abnormalities or neurological dysfunction. The specific errors vary from one child to the next and are not as readily predictable as those found in organically based disorders.

***The IEP team may not identify a child as speech impaired who exhibits any of the following:***

- mild, transitory, or developmentally appropriate sound production difficulties that students experience at various times and to various degrees,
- speech difficulties resulting from dialectal differences, learning English as a second language, temporary physical disabilities or environmental, cultural or economic factors,
- a tongue thrust which exists in the absence of a concomitant impairment in speech sound production,
- elective or selective mutism or school phobia without a documented speech sound production impairment, and
- the errors do not interfere with educational performance.

Production of sounds in connected speech is a series of complex maneuvers. Oral communication requires exact placement, sequencing, timing, direction and force of the articulators. These occur simultaneously with precise airstream alteration, initiation or halting of phonation and velopharyngeal action. Consequently, assessment of speech sound production is a multi-faceted procedure requiring a good deal of skill and knowledge.

Components for a comprehensive assessment include:

- articulation assessment and/or phonological processes assessment,
- developmental information/profile,
- stimulability probe of errors,
- oral peripheral examination,
- analysis of intelligibility (may include a combination or all items listed below),
  - analysis of errors
    - number of errors/percentage of consonants correct (PCC)
    - error types (substitutions, omissions, distortions, additions)
    - form of errors, error patterns (phonological processes)
    - consistency of errors
    - frequency of errors
  - rate of speech
- documentation of adverse effect on educational performance, and
- hearing screening.

Each of these components is discussed in greater detail in the following section.

Assessment Guidelines for Speech-Sound Production

## CONDUCTING A SPEECH EVALUATION FOR ARTICULATION OR PHONOLOGICAL PROCESSES

- Conduct hearing and vision screenings.
- Obtain relevant information from the parents (i.e., concerns about communication skills, developmental history, etc.)
- Obtain information from teachers related to progress in the general curriculum, communication skills, behavior and social interactions. Information must be gathered from two educators: the student's classroom teacher as well as another professional. For preschoolers, obtain this information from child care providers or adults who see the child outside the family structure.
- Review school records, e.g., grades, test scores, special education records, documentation of prereferral strategies/interventions and discipline and attendance records.
- Complete an oral-peripheral examination.
- Administer an articulation test and/or a test of phonological processes. If a preschooler is unable to participate in assessment using standardized measures, document the attempt and obtain a phoneme inventory from a speech sample.
- Conduct stimulability probes to determine how well the student can imitate correct production of error sounds. Stimulability refers to the student's ability to produce a correct (or improved) production of the erred sound given oral and visual modeling. Most articulation tests include this step on the test form.
- Obtain and analyze a speech sample to determine intelligibility of conversational speech and consistency of error patterns.
- Document how sound production errors adversely affect the student's educational performance in the general education classroom or the learning environment.
- Complete the *Speech Sound Production Severity Rating Scale* using data from the assessment.
- Finalize and submit to the IEP team a *Speech and Language Evaluation Report* .

### COMPONENTS OF THE ASSESSMENT

#### **Articulation or Phonological Processes Assessment**

Generally, errors in sound production are classified as either motor-based or cognitive/linguistic-based (Bernthal and Bankson, 1988).

#### Articulation Errors

Articulation errors (substitutions, distortions, omissions, and/or additions) are typically considered motor-based errors. Articulation, which refers to the actual movements of the articulators during speech production, is subsumed under the generic term phonology. An articulation problem may be defined as difficulty in producing a single or a few sounds with no pattern or derivable rule. It is considered to be the result of phonemic, rather than phonological inadequacy (i.e., the problem results from the student's not having "learned" all of the sounds). Articulation testing is concerned primarily with identifying those sounds that the student has difficulty producing. Intervention is focused on correcting individual error sounds, one by one.

## Phonological Processes

Phonological process deviations are considered to be cognitive/linguistic-based. Students with phonological process problems demonstrate difficulty in acquiring a phonological system, not necessarily in production of the sounds. The phonological system of a language governs the ways in which sounds can be combined to form words. A phonological process is a systematic sound change that affects classes of sounds or sound sequences and results in a simplification of production. Errors have logical and coherent principles underlying their use. The errors can be grouped on some principle and thus form patterns. The student's patterns of "simplification" of sound usage severely affect intelligibility. In contrast to articulation testing, phonological assessment is concerned not only with production skills, but also with the way sounds are sequenced and used in contrast to signal meaning differences. Philosophy, assessment, and method of intervention addressing phonological processes must necessarily differ markedly from traditional approaches to either functional or organic articulation problems. The goal of phonological intervention is not to perfect individual sounds, but rather to eliminate phonological processes. It aims at a reorganization of the student's phonological system, thereby improving intelligibility.

Some SLTs, as well as some of the professional literature, classify phonological process errors as a language-based impairment. However, for purposes of these guidelines, phonological process errors are included, along with articulation errors, under the category of *Speech Sound Production*. The decision to administer an articulation test versus a phonological process analysis is based on the examiner's professional judgment. If the errors are non-organic (i.e., not due to structural deviations or neuromotor control problems) the most discriminating factor to aid in the decision is that of **intelligibility** – the more unintelligible the student's speech, the greater the need for phonological process analysis. When evaluating students whose intelligibility factor is moderate to severe or profound, tests of phonological processes will prove more diagnostically valuable than traditional articulation tests.

In some cases the examiner may complete a process analysis after first administering an articulation test. Some phonological processes can be detected from the results of traditional articulation tests. For example, when most of the phonemes in the final position column of the articulation test form show a deletion symbol, perceptive examiners can recognize the pattern of final consonant deletion. Most substitution and deletion processes can be identified in this manner, particularly if the examiner is familiar with phonological process terminology and descriptions. For example, the student who produces /p/ for /f/, /b/ for /v/, /t/ for /s/, and /d/ for /z/ is replacing a fricative with a stop, a process commonly known as *Stopping*. Other error patterns, however, are not as easily identified from traditional articulation test results. Depending upon the complexity of the student's errors, a more in-depth phonological analysis may be indicated in order to identify all processes used by the student. This in-depth analysis becomes particularly important in determining the hierarchy of intervention targets.

The advantage of identifying phonological error patterns is that those patterns can then be targeted for remediation, thereby affecting more than one sound at a time. For example, if a student exhibits a final consonant deletion pattern, you may choose to target final consonants in general rather than focus on each and every sound that is omitted at the end of words.

It should be noted that an articulation assessment and phonological process analysis can be derived without the use of a published standardized assessment instrument.

### **Developmental Information/Profile**

Norms are helpful for estimating approximately how well a student's sounds are developing. Although norms are extremely useful, there are limitations to over-relying on or using them exclusively to identify a sound production impairment. Several factors limit their value. An age norm is only an average age at which a behavior occurs. Most norms do not reflect normal and acceptable developmental variability. Certain errors are developmentally appropriate while others are not. Different norms are rarely in agreement with each other. The differences are caused by many factors, including when the study was conducted, where the study was conducted, the size and characteristics of the sample, the research design followed, and the mastery criteria used.

Articulation tests usually elicit phonemes in only one phonetic context within a pre-selected word. There may be other contexts and words in which the student can/cannot produce the target sound correctly. Most tests elicit phonemes at the word level for the assessment of initial, medial and final position production. Conversational speech, however, is made up of complex, co-articulated movements in which discrete initial, medial, and final sounds may not occur. Thus, sound productions in single words may differ from those in spontaneous speech. Keep in mind that normative data tell only part of the story when assessing for a speech sound production impairment.

### **Phonological Processes**

The following are *minimal requirements* for qualifying a sound change error as a phonological process:

1. A process must affect more than one sound from a given sound class. For example, the omission of [t] from the end of words does not necessarily signal the process of final consonant deletion. Deletion of at least one additional plosive [p, b, d, k, g] must also be observed.
2. The sound change or process must occur at least 40% of the time. An inconsistent sound change indicates only a potential phonological process. In other words, if the student uttered ten words containing final consonants, s/he must delete the consonant in at least four of those words in order for the pattern to be considered as that of final consonant deletion. An inconsistent sound change may also signal that the student is in a transition phase of development, i.e., the student is gradually eliminating the process on his/her own as sound productions become more developmentally appropriate.

## **Stimulability Probe of Errors**

Stimulability refers to the student's ability to produce a correct (or improved) production of the erred sound given oral and visual modeling. Most articulation tests include this step on the test form. It is not necessary to assess stimulability for sounds produced correctly, only those in error.

### Directions for assessing stimulability

1. Ask the student to watch, listen carefully, and say what you say. Do not give special instructions on the correct production.
2. Model the production of each selected phoneme in isolation and ask the student to imitate. Begin modeling for consonant blends at the syllable level.
3. If the student is successful, go on to the syllable level, modeling for each position (initial, medial, and final).
4. If the student is successful at the syllable level, proceed to the word level, modeling for each position.
5. If the student is successful at the word level, you may wish to proceed to the phrase/sentence level, modeling for each position.
6. If the student fails to imitate a stimulus correctly at any level (isolation, syllable, or word), ask the student to watch and listen carefully to the following directions:
  - Say the stimulus three times (*multiple stimulations*).
  - Have the student try again.
  - If the student repeats successfully, continue to the next level of complexity.
  - If the student cannot imitate the stimulus correctly after multiple stimulations, discontinue stimulation with that sound.

The assessment of stimulability provides important prognostic information. Moreover, those behaviors that are most easily stimulated can provide excellent starting points for intervention. They often lead to intervention success quicker than other, less stimutable behaviors.

## **INTERPRETING AND REPORTING EVALUATION RESULTS**

When assessing articulation skills, the sound in question must be in error in at least two positions (initial, medial, or final). Information gathered from the formal/informal assessment instrument(s) regarding sound production errors is to be compared to the developmental norms or charts:

- *Sound Development Norms* chart – The cut-off point is one year beyond the reported age of acquisition for each sound position.
- All other developmental norms or charts – The cut-off point is the exact age as reported for each phoneme.

## **Analysis of Intelligibility – Phoneme Production in Conversational Speech**

By three years of age, a child's spontaneous speech should be at least 50% intelligible to unfamiliar adults. By four years of age, a child's spontaneous speech should be intelligible to unfamiliar adults, even though some articulation and phonological differences are likely to be present.

There are many factors that can negatively influence intelligibility, including:

- *Number of errors* (Generally, the greater the number of sound errors, the poorer the intelligibility.)
- *Types of sound errors* (Phonological process errors affect intelligibility to a greater degree than simple articulation errors.)
- *Inconsistency of errors*
- *Vowel errors*
- *Rate of speech* (especially if it is excessively slow or fast)
- *Atypical prosodic characteristics of speech* (i.e., abnormal intonation or stress)
- *Length and linguistic complexity of the words and utterances used*
- *Student's anxiety about the testing situation and/or fatigue* (Fatigue particularly affects very young children.)

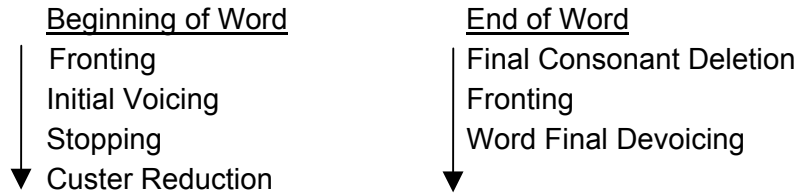
Almost all published test instruments provide guidelines to help evaluate information obtained during test administration. While this information is helpful, it is certainly not an all inclusive analysis. A comprehensive examination of speech sound production would generally include some of the bulleted items listed in "Analysis of Errors" below. Much of this information is gathered through speech sampling. This type of analysis can be time consuming. Depending on the severity, scope, and impact of the speech sound production problem, an in-depth and detailed analysis will not be warranted for all students referred for formal evaluation. The examiner should use professional judgment when determining which measures are appropriate for the student being evaluated.

Information is included here for each of the subsections listed in the *Speech Sound Production Considerations* segment earlier in this section. In any case, the evaluation must necessarily include observation and/or data related to speech intelligibility since this item is specifically addressed in the *Eligibility Standards for Speech Impairment*, i.e., "Evaluation of articulation abilities shall include...analysis of phoneme production in conversational speech". Intelligibility is also specifically addressed on the *Speech Sound Production Severity Rating Scale*.

### **Analysis of Errors**

- *Error Types* – The types of errors identified by traditional articulation tests generally fall into four major categories: (1) Substitutions (2) Omissions (3) Distortions, and (4) Additions. Typically, the presence of omissions and additions affect intelligibility to a greater degree than substitutions and distortions. In addition to providing descriptive information as to the problem, analyzing error types also helps to select, prioritize and plan intervention targets.
- *Form of Errors/Error Patterns* – An inventory of phonological processes is most valuable when evaluating students who have poor speech intelligibility due to multiple articulation errors. Phonological processes describe what children do in the normal developmental process of speech to simplify standard adult productions. When a student uses many different processes or uses processes that are not typically present for his/her developmental age, intelligibility will be affected. The following list of error patterns is arranged in descending order from most to least effect on intelligibility.





- *Consistency of Errors* – The assessment data and/or speech sample should be analyzed for consistency of errors between the speech sample and the articulation test/phonological process assessment within the same speech sample and between different speech samples. A student may be able to produce a designated sound correctly at the single word level, yet correct productions may break down as the length and complexity of utterances increase. Typically, more sound errors will be identified during the connected speech sample.
- *Frequency of Occurrence* – Frequency of occurrence refers to the relative frequency or percentage of occurrence of a sound in continuous speech. It should be noted that the sounds [n, t, s, r, d, and m], cumulatively represent nearly one-half of the total consonants used. When misarticulated, these sounds will have a greater negative effect on speech intelligibility than the less frequently occurring sounds such as /zh/, /ch/, /j/, and voiceless /th/.

### **Rate of Speech**

Occasionally a student's speech rate can directly affect articulation and intelligibility. Speech rates vary tremendously among normal speakers, making it difficult to assign a standard word-per-minute (WPM) index. Purcell and Runyan (1980) measured the speaking rates of students in the first through fifth grades and found a slight increase in their average rate at each grade level. The first graders averaged 125 words per minute, and the fifth graders averaged 142 words per minute. It is imperative to recognize that some people who speak exceedingly fast or slow still have excellent intelligibility and control of their speech, while others exhibit significant communication problems due to their rate.

The importance of measuring rate of speech does not lie in comparing it with pre-established norms, which only indicate whether the speech rate is normal, faster than normal, or slower than normal. The value of assessing rate of speech is that it allows evaluation of its effect on the student's communication abilities. Will the use of a faster or slower rate result in better communication? Can a better speech rate be elicited? Can it be maintained? These are important questions to consider when assessing the implications of speech rate on intelligibility.

Intelligibility, although a critical concept in the evaluation of articulation and phonological process disorders, is notoriously difficult to measure objectively. In most cases there are multiple factors that influence overall intelligibility. Keep the following tips in mind when rating/determining intelligibility:

- Identify factors that affect intelligibility.
- View the intelligibility rating as being approximate, rather than absolute or definitive. Report intelligibility in ranges (e.g., 65-75%), particularly when intelligibility varies. A student may be 90-100% intelligible when speaking in utterances of one to three syllables. The same student, however, may be only 50% intelligible in utterances of four or more syllables.
- Take more than one conversational sample and seek varied environments when possible.

### **USING THE SPEECH SOUND PRODUCTION SEVERITY RATING SCALE**

The *Speech Sound Production Severity Rating Scale* is to be used as a tool after a complete assessment of the student's sound production performance. The scale is designed to assist the examiner with interpretation and documentation of the results of assessment findings in terms of severity or intensity. This is not a diagnostic instrument and should not be used in the absence of assessment data.

In order to be identified as a student with a speech impairment in articulation, the deviation(s) in sound production must be determined to have an "adverse effect on educational performance." The rating scale serves three purposes:

1. to document the absence or presence of a speech sound production deviation and to what degree (*Mild, Moderate* or *Severe*).
2. to indicate the absence or presence of "adverse effect on educational performance."
3. to determine whether or not the student meets eligibility standards for a Speech Impairment in Articulation.

"Educational performance" refers to the student's ability to participate in the educational process and must include consideration of the student's social, emotional, academic, and vocational performance. The presence of any deviation in speech sound production does not automatically indicate an adverse effect on the student's ability to function within the educational setting. The deviation must be shown to interfere with the student's ability to perform in the educational setting before a disability is determined. The effect on educational performance is, therefore, best determined through classroom observations, consultation with classroom and special education teachers, and interviews with parents and the student. Teacher checklists are useful for determining specifically how the sound production problem affects educational performance.

## TEACHER INPUT – SPEECH SOUND PRODUCTION

**Student:** \_\_\_\_\_ **School:** \_\_\_\_\_ **Teacher:** \_\_\_\_\_ **Grade:** \_\_\_\_\_

*Your observations and responses concerning the above student will help determine if a sound production problem which adversely affects educational performance. Please return the completed form to the Speech-Language Teacher*

	Yes	No	Sometimes	N/A
Is this student's intelligibility reduced to the extent that you find it difficult to understand him/her? If Yes, check appropriate description: <input type="checkbox"/> Occasional Difficulty <input type="checkbox"/> Frequent Difficult <input type="checkbox"/> Considerable Difficult	—	—	—	—
Student's speech is intelligible even though some sound errors may be present.	—	—	—	—
Check one.	<input type="checkbox"/> 50% <input type="checkbox"/> 70% <input type="checkbox"/> 80% <input type="checkbox"/> 90% <input type="checkbox"/> 100%			
Does this student appear frustrated or embarrassed because of his/her production errors?	—	—	—	—
Does the student avoid speaking in class or in other situations because of his/her production errors?	—	—	—	—
Has this student ever expressed concern about his/her production errors?	—	—	—	—
Does the student's speech distract listeners from what the student is saying?	—	—	—	—
Does the student have age-appropriate awareness of sounds in words and ability to rhyme, segment, and manipulate sounds in words?	—	—	—	—
Does the student make the same errors when reading aloud as s/he does when speaking?	—	—	—	—
Does the student have difficulty discriminating sounds and/or words from each other?	—	—	—	—
Does the student make spelling errors that appear to be associated with speaking errors?	—	—	—	—
Does the student self-correct articulation errors?	—	—	—	—
Does the student have reading problems due to articulation problems?	—	—	—	—
Does the student mispronounce during reading of words containing error sounds?	—	—	—	—
Rate the impact of the student's speech errors on his/her social, emotional, academic and/or vocational functioning. Check one: <input type="checkbox"/> does not interfere <input type="checkbox"/> minimal impact <input type="checkbox"/> interferes <input type="checkbox"/> seriously limits				

Do you have any other observations relating to the articulation skills of this student? \_\_\_\_\_

*It is my opinion that these behaviors adversely affect the student's educational performance.*    YES    NO

If yes, provide explanation: \_\_\_\_\_  
 \_\_\_\_\_  
 \_\_\_\_\_

\_\_\_\_\_  
*Classroom Teacher Signature*

\_\_\_\_\_  
*Date*

## GFT SOUND DEVELOPMENT NORMS

AGE	INITIAL POSITION	MEDIAL POSITION	FINAL POSITION
2	/b/, /d/, /h/, /m/, /n/, /p/	/b/, /m/, /n/	/m/, /p/
3	/f/, /g/, /k/, /t/, /w/	/f/, /g/, /k/, /ŋ/, /p/, t/	/b/, /d/, /g/, /k/, /n/, /t/
4	/kw/	/d/	/f/
5	/tʃ/, /dʒ/, /l/, /s/, /ʃ/, /l/, /bl/	/tʃ/, /dʒ/, /l/, /s/, /ʃ/, /z/	/l/, /ŋ/, /tʃ/ /dʒ/ /s/, /ʃ/ /r/, /v/, /z/
6	/r/, /v/, /br/, /dr/, /fl/, /fr/, /gl/, /gr/, /kl/, /kr/, /pl/, /st/, /tr/	/r/, /v/	
7	/z/, /sl/, /sp/, /sw/, /ð/, /θ/	/ð/	/θ/
8		/θ/	

This information was obtained from the *Goldman-Fristoe Test of Articulation-2*. The data is based on the age at which 85% of GFTA-2 standardization sample correctly produced consonant and consonant cluster sounds. The above data includes the 38 consonants and consonant clusters assessed in the Sounds-in-Words portion of the GFTA-2.

## SOUND DEVELOPMENT CHART – FEMALES

Listed below are the recommended ages of acquisition for phonemes and clusters, based generally on the age at which 90% of the children correctly produced that sound. These recommended ages are for phonetic acquisition only.

Phoneme	yrs:mo	3:0	3:6	4:0	4:6	5:0	5:6	6:0	6:6	7:0	7:6	8:0	8:6	9:0
m														
h initial														
w initial														
p														
b														
d														
f														
k														
g														
n														
j initial														
t														
th voiced														
l														
f final														
v														
sh														
ch														
l final														
th														
dz														
r														
r final voiced														
ng final														
s														
z														
<b>Word-initial clusters</b>		<b>3:0</b>	<b>3:6</b>	<b>4:0</b>	<b>4:6</b>	<b>5:0</b>	<b>5:6</b>	<b>6:0</b>	<b>6:6</b>	<b>7:0</b>	<b>7:6</b>	<b>8:0</b>	<b>8:6</b>	<b>9:0</b>
tw kw														
pl bp kl gl fl														
pr br tr dr kr gr fr														
sp st sk														
sm sn														
sw														
sl														
skw														
spl														
spr str skr														
thr														

Source: Iowa-Nebraska Articulation Norms

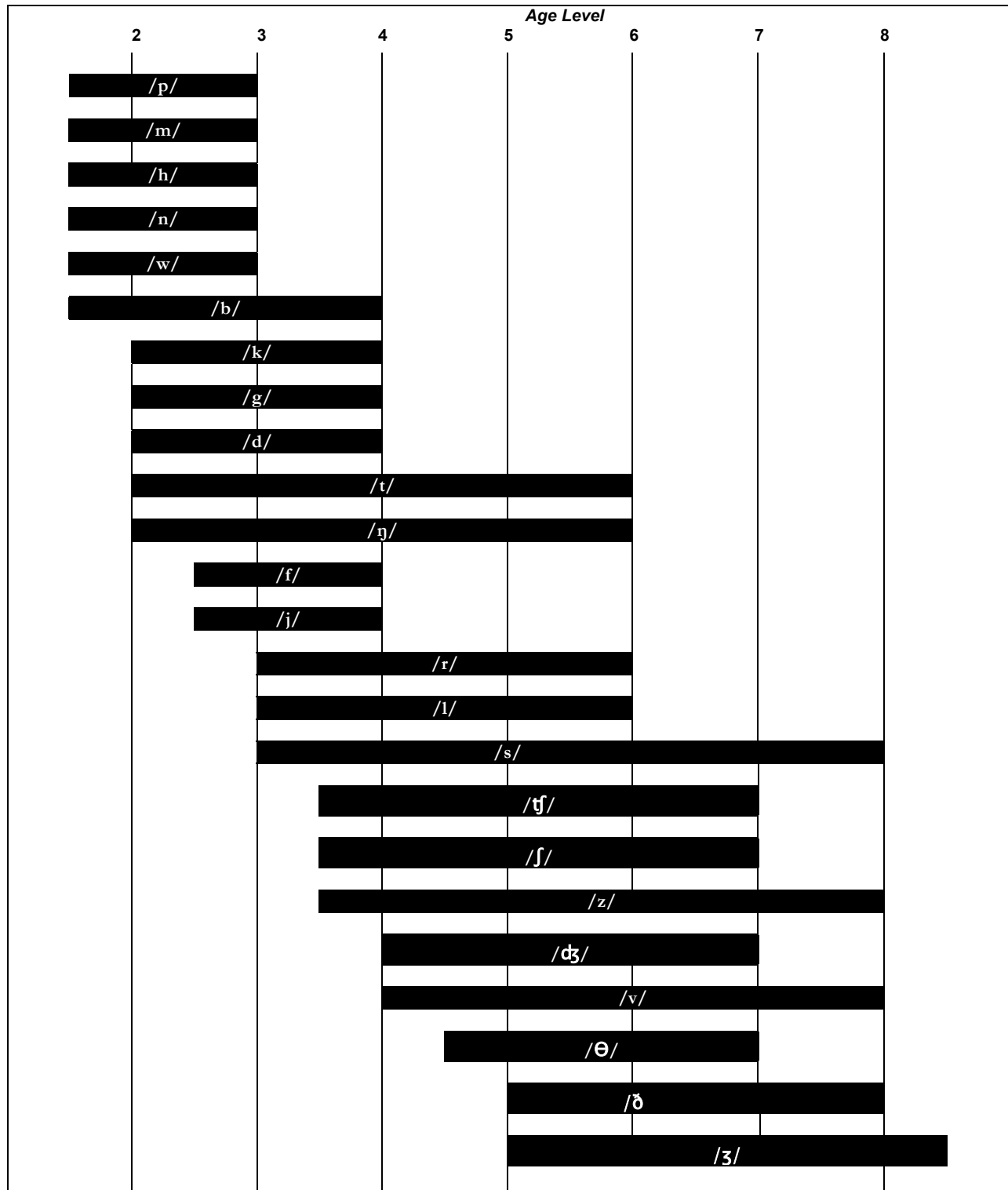
## SOUND DEVELOPMENT CHART – MALES

Listed below are the recommended ages of acquisition for phonemes and clusters, based generally on the age at which 90% of the children correctly produced that sound. These recommended ages are for phonetic acquisition only.

Phoneme	yrs:mo	3:0	3:6	4:0	4:6	5:0	5:6	6:0	6:6	7:0	7:6	8:0	8:6	9:0
m														
h initial														
w initial														
p														
b														
n														
d														
f														
k														
t														
g														
j initial														
f final														
v														
l														
sh														
ch														
l final														
th voiced														
dz														
th														
r														
r final voiced														
ng final														
s														
z														
<b>Word-initial clusters</b>		<b>3:0</b>	<b>3:6</b>	<b>4:0</b>	<b>4:6</b>	<b>5:0</b>	<b>5:6</b>	<b>6:0</b>	<b>6:6</b>	<b>7:0</b>	<b>7:6</b>	<b>8:0</b>	<b>8:6</b>	<b>9:0</b>
tw kw														
pl bp kl gl fl														
pr br tr dr kr gr fr														
sp st sk														
sm sn														
sw														
sl														
skw														
spl														
spr str skr														
thr														

Source: Iowa-Nebraska Articulation Norms.

## AGE RANGES OF NORMAL CONSONANT DEVELOPMENT<sup>1</sup>

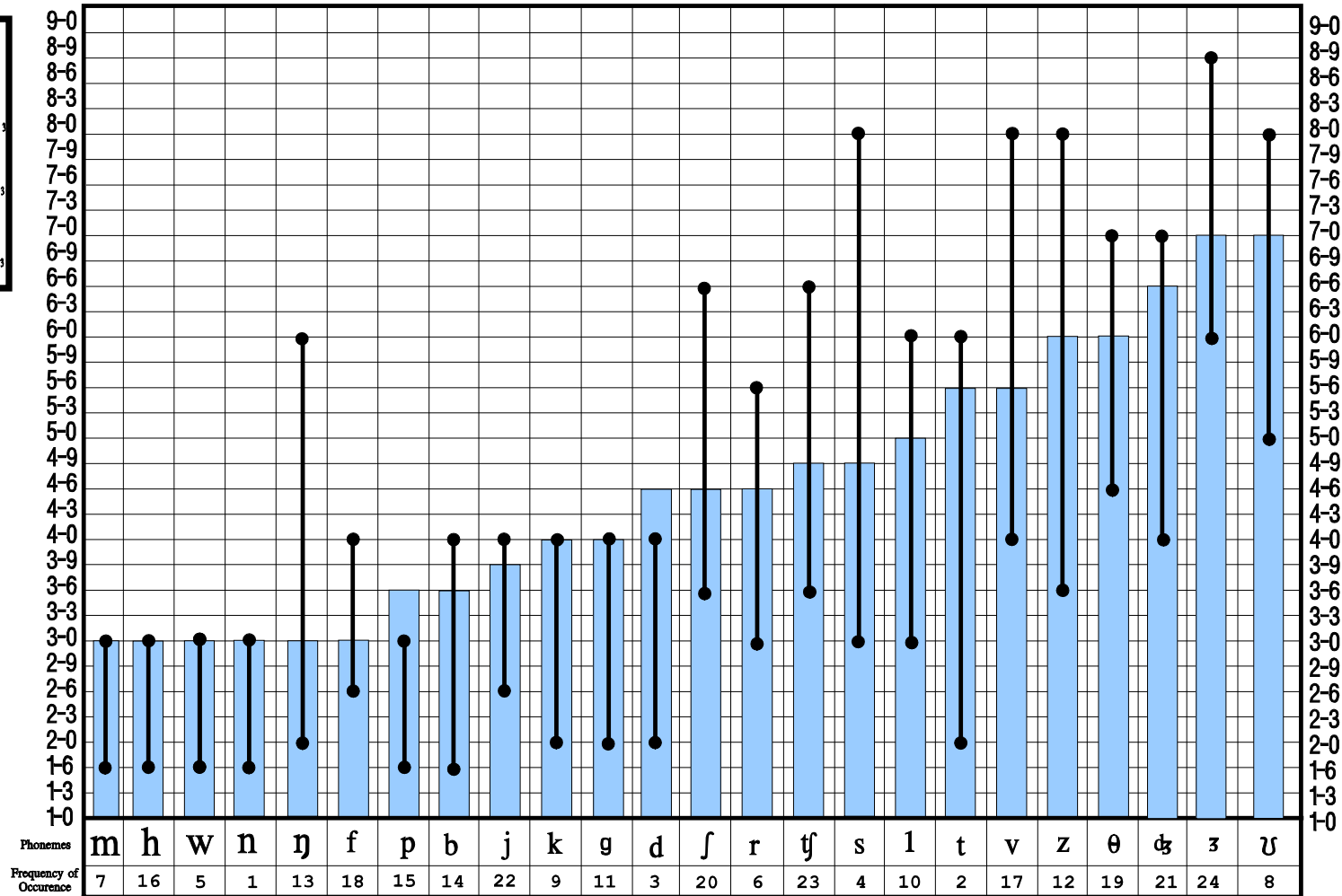
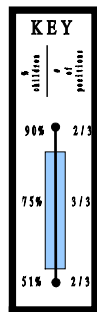


Average age estimates and upper age limits of customary consonant production.. The solid bar corresponding to each sound starts at the median age of customary articulation; it stops at age level at which 90% of all children are producing the sound (data from Templin, 1957; Wellman et al., 1931). From E. Sander (1972), "When Are Speech Sounds Learned? Journal of Speech and Hearing Disorders, 37, 55-63.

<sup>1</sup>Assessment in Speech-Language Pathology CD ROM. Copyright © 1998 by Singular Publishing Group.

# Consonant Development Chart

Instructions: Draw a heavy horizontal line at the child's level for comparison purposes.





## FIVE COMMONLY CITED NORMS FOR CONSONANT DEVELOPMENT

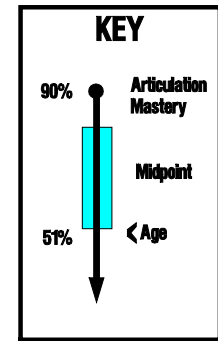
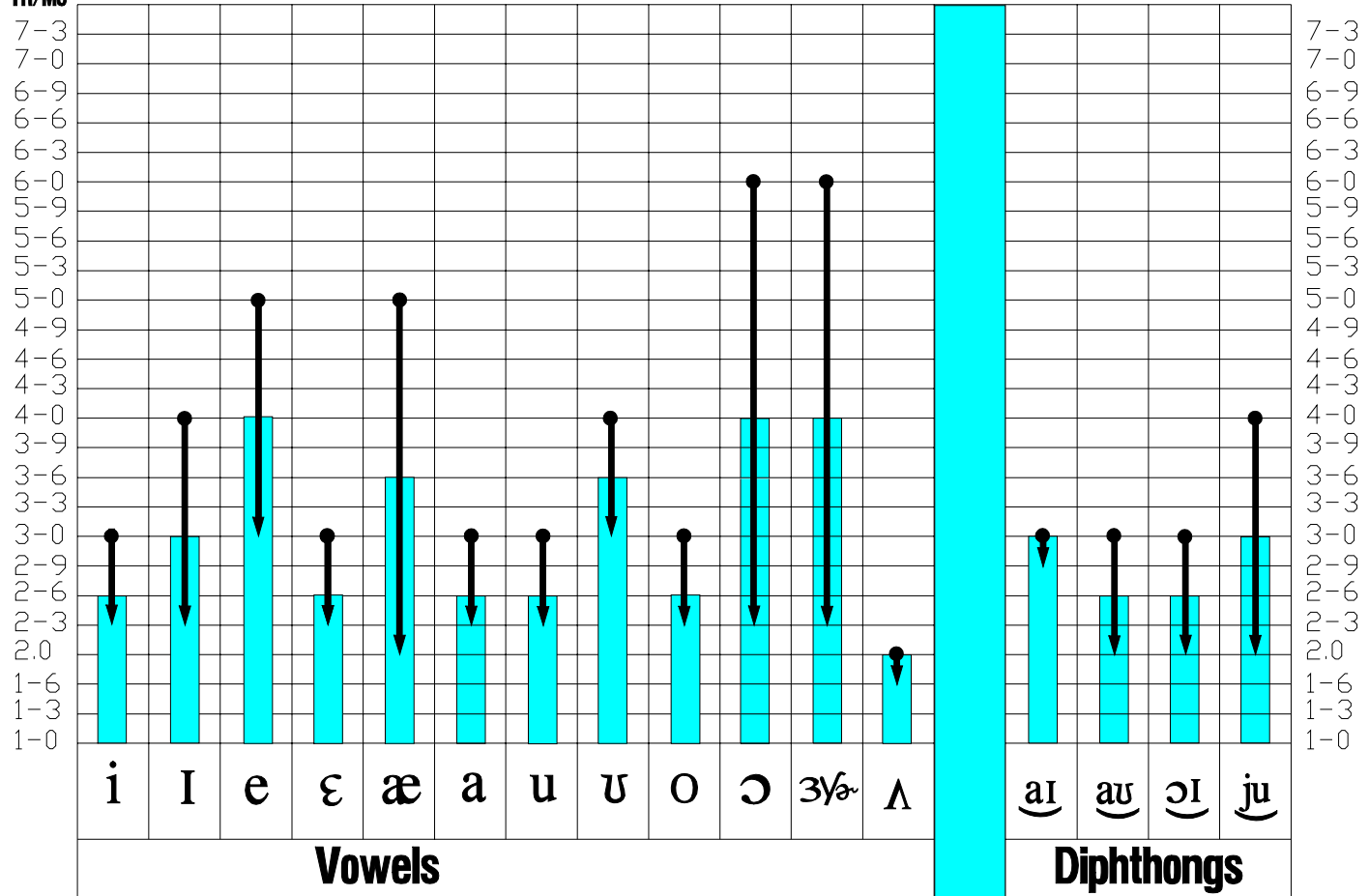
Consonant	Wellman et al.	Pool	Templin	Sander	Prather et al.
	1931	1934	1957	1972	1975
m	3	3 ½	3	before 2	2
n	5	4 ½	3	before 2	2
h	3	3 ½	3	before 2	2
p	4	3 ½	3	before 2	2
f	3	5 ½	3	3	2 – 4
w	3	3 ½	4	before 2	2 – 8
b	3	3 ½ 4	4	before 2	2 – 8
ŋ	4 ½	3	2	2	2
j	4	4 ½	3 ½	3	2 – 4
k	4	4 ½	4	2	2 – 4
g	4	4 ½	4	2	2 – 4
l	4	4 ½	4	2	2 – 4
d	5	4 ½	4	2	2 – 4
tʃ	5	4 ½	4		3 – 8
v	5	6 ½	6	4	4
z	5	5 ½	5	6	4
ʒ	6	6 ½	7	6	4
θ		7 ½	6	5	4
ðʒ			7	4	4
ʃ		6 ½	4 ½	4	4 – 8
ð		6 ½	4 ½	4	3 – 8

Source: Reprinted with the permission of Merrill, an imprint of Macmillan Publishing Company from Assessment and Remediation of Articulatory and Phonological Disorders

# Vowel Development Chart

Chronological  
Age:  
YR/MO

Instructions: Draw a heavy horizontal line at the child's age level for comparison purposes.

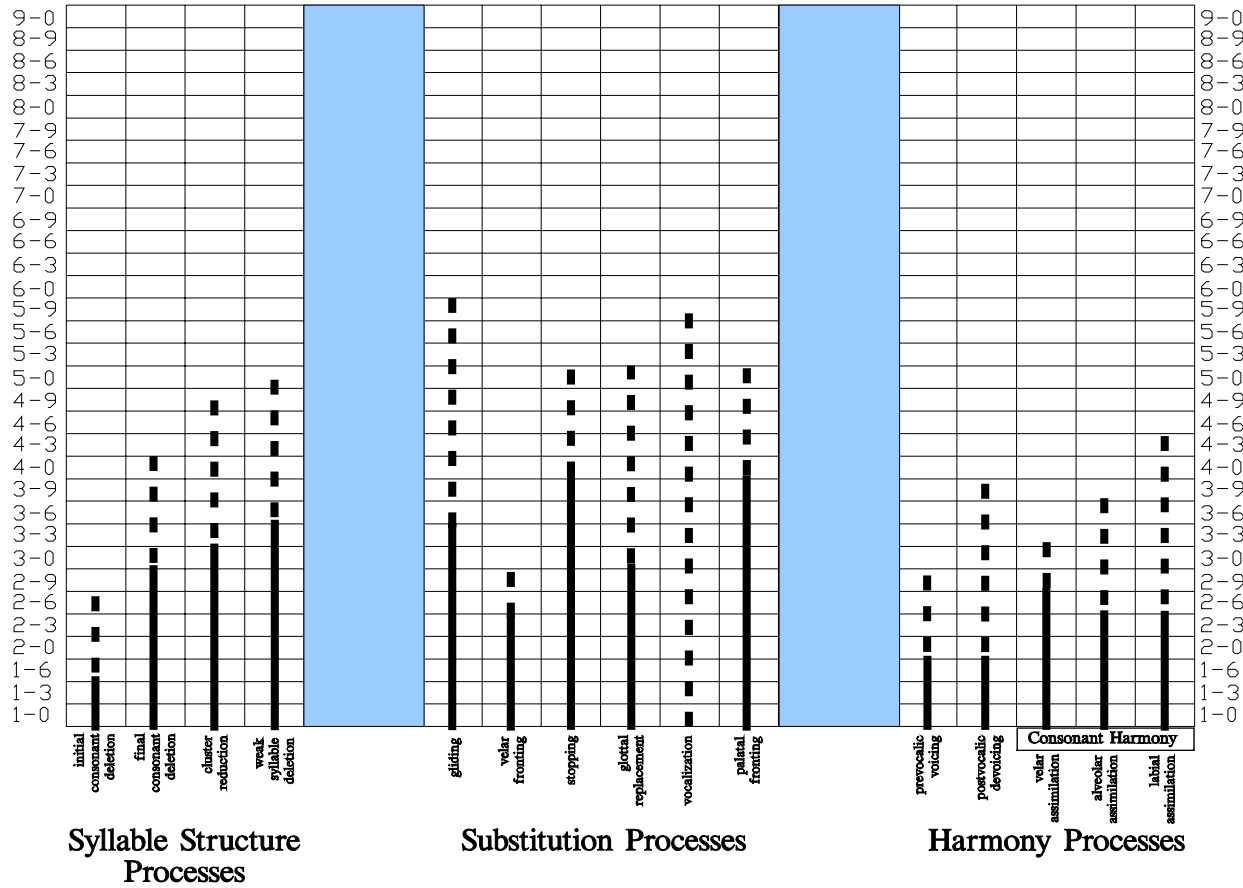


Source: Developmental Articulation and Phonology Profile. Academic Communication Associates (1997)

# Composite Age of Normal Phonological Process Extinction

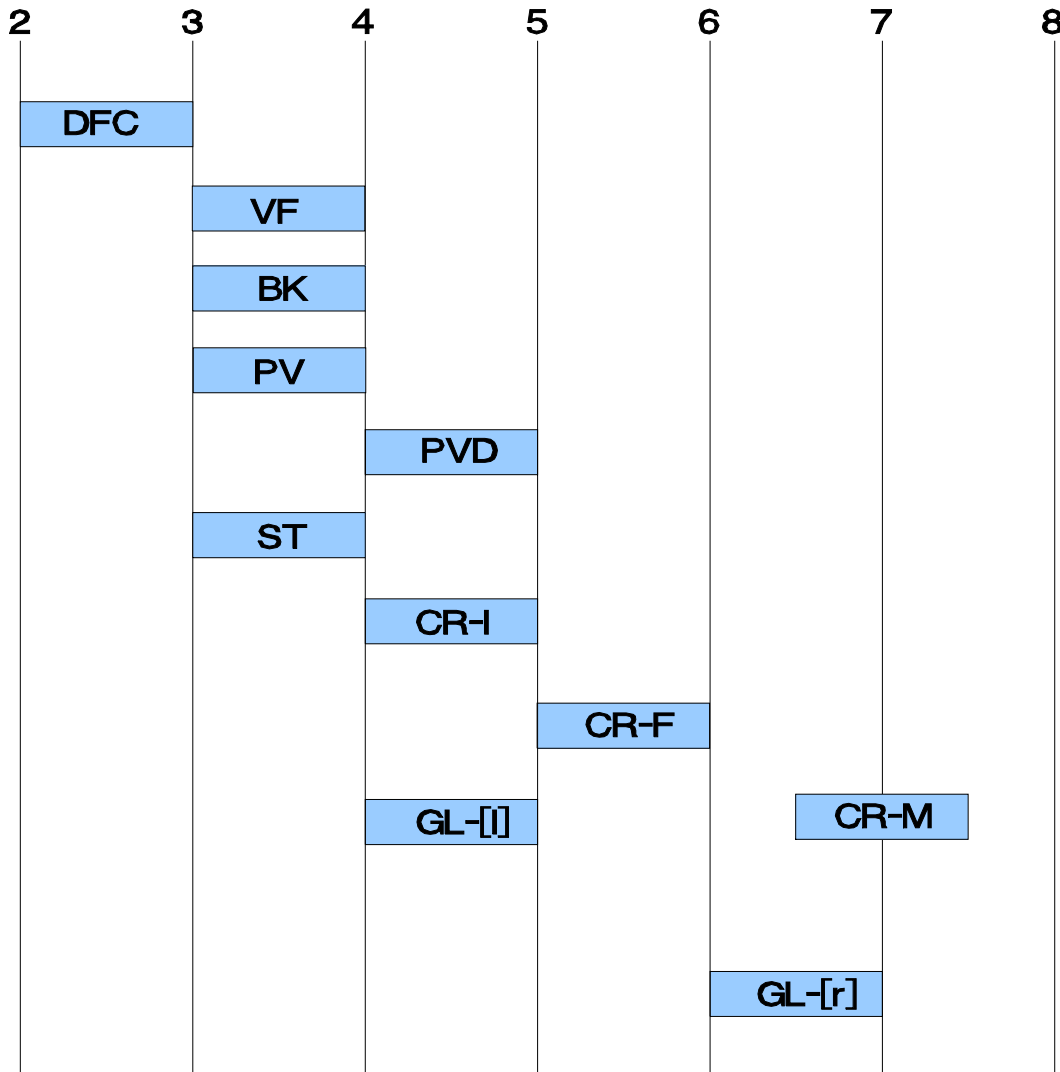
Instruction: Draw a heavy horizontal line at the child's age level for comparison purposes

**KEY**  
 - - - -  
 Indicates age range during which processes are normally extinguished



Composite Age of Normal Phonological Process Extinction

## Age Ranges for Disappearance of Phonologic Processes Age in Years



DFC	Deletion of Final Consonants	ST	Stopping	GL-[l]	Gliding of Liquids - [l]
VF	Velar Fronting	CR-I	Cluster Reduction - Initial	GL-[r]	Gliding of Liquids - [r]
BK	Backing	CR-M	Cluster Reduction - Medial	PVD	Postvocalic Devoicing
PV	Prevocalic Voicing	CR-F	Cluster Reduction - Final		

Normative Data: These guidelines for determining if a process should be a concern are reprinted with permission from *Rules Phonological Evaluation* (Webb and Duckett, 1990a). These guidelines are based on normative data collected from the literature and from field testing (Webb and Duckett, 1990b, 1992). Each horizontal bar in the chart above identifies the age ranges when phonologic processes disappear in normally developing children

# GRUNWELL 's (1997) PROFILE OF PHONOLOGICAL DEVELOPMENT

STAGE I (0:9 - 1:6)	<i>Nasal</i> <i>Plasive</i> <i>Fricative</i> <i>Approximant</i>	<i>Labial</i>	<i>Lingual</i>	<i>First words tend to slury</i> <i>Individual varification in consonants used:</i> <i>Phumatic variables in pronunciation: and</i> <i>all simptifying processes applicable</i>	
STAGE II (1:6 - 2:0)	p m w b	t n d		Reduplication Consonant Harmony FINAL CONSONANT DELETION CLUSTER REDUCTION	FRONTAL of velars STOPPING GLIDING /r/ → [w] CONTEXT SENITIVE VOICING
STAGE III (2:0 - 2:6)	p m w b	t n d	(ŋ) (k g) h	Final Consonant Deletion CLUSTER REDUCTION	FRONTAL of velars STOPPING GLIDING /r/ → [w] CONTEXT SENITIVE VOICING
STAGE IV (2:6 - 3:0)	p m b	t n d	ŋ k g	Final Consonant Deletion CLUSTER REDUCTION	STOPPING /v ʊ z ʄ ɔ/ → [f] FRONTING /f/ → [s] GLIDING /r/ → [w] Context Sensitive Voicing
STAGE V (3:0 - 3:6)	f w	t n d	j h	Clusters appear: • obs. + approx. used; /s/ clusters may occur	STOPPING /v ʊ / ( /v / ) /θ/ → [f] FRONTING of GLIDING /r/ → [w]
STAGE VI (3:6 - 4:0) (4:0 - 4:6)	p m f b w v	t n s d l(r) z	ʄ ɔ k j h ŋ g	Clusters established: • obs. + approx.: approx. "Immature" /s/ clusters: /s/ → type FRICATIVE • obs. + approx. acceptable /s/ clusters: /s/ → type FRICATIVE	/θ/ → [f] /ʊ/ → [d] or [v] (PALATALIZATION of / ʄ ɔ ʄ / GLIDING /r/ → [w]
STAGE VII (4:6 - < )	p m f b w v	t n s d ʄ r z	ʄ ɔ k j h ŋ g		/θ/ → [f] /ʊ/ → [d] or [v] /r/ → [w] or /u/

KEY: Upper case letters = processes that are almost always present  
Lower case letters = gradual disappearances of a process

## GRUNWELL'S (1987) CHRONOLOGY OF PHONOLOGICAL PROCESSES

	2:0 to 2:6	2:6 to 3:0	3:0 to 3:6	3:6 to 4:0	4:0 to 4:6	4:6 to 5:0	5:0 +
Weak Syllable Deletion	[Green]		[Red]				
Final Consonant Deletion	[Green]		[Red]				
Reduplication	[Red]						
Consonant Harmony	[Green]	[Red]					
Cluster Reduction (Initial obstruent + approximant /s/ + consonant)	[Green]		[Red]				
Stopping							
/ f /	[Red]						
/ v /	[Green]	[Red]					
/ θ /	[Green]	[Red]	[Green]	[Red]			
/ ʊ /	[Green]	[Red]	[Green]	[Red]			
/ s /	[Green]	[Red]					
/ z /	[Green]	[Red]					
/ ʃ /	[Green]	[Red]					
/ tʃ dʒ /	[Green]	[Red]					
Fronting /k, g, ŋ/	[Green]	[Red]					
Gliding /r/ → [w]	[Green]	[Red]					
Context-Sensitive Voicing	[Green]	[Red]					

■ Process use has been suppressed.  
■ Process use is fading

Grunwell's (1987) Chronology of Phonological Processes

## PHONOLOGICAL PROCESSES

Definition: Systematic changes that affect entire phoneme classes or phoneme sequences. These changes are age appropriate up to the ages listed below.

Page 1 of 3

Ages	DELETIONS	
2 3 4	1. Initial Consonant Deletion 2. Final Consonant Deletion 3. Consonant Cluster Reduction	at/hat no/noze tap/stop (deleting one or more)
<b>SUBSTITUTIONS</b>		
3 ½ – 5 3 3 – 6 4 – 5 5 – 6	1. Stopping 2. Voicing/Devoicing 3. Gliding 4. Fronting/Backing 5. Affrication/Deaffrication	ton/sun      dus/juice die/tie      crip/crib ju/shoe      wef/leaf      weed/read dum/gum      sue/shoe/      cop/top chew/shoe      ship/chip
<b>ASSIMILATION</b>		
3 – 4 3 – 4 or 3 3 – 4 4 3	1. Progressive 2. Regressive  3. Velar Assimilation 4. Labial Assimilation 5. Alveolar Assimilation 6. Nasal Assimilation	beb/bed      dod/dog lellow/yellow      fwim/swim  gog/dog beb/bed      fwim/swim lellow/yellow      dod/dog neon/pencil
<b>OTHER (infrequent)</b>		
3 – 4 4 7 5 2 2	1. Vocalization (vowelization) 2. Weak Syllable Deletion 3. Transposition (Metathesis) 4. Vowel Naturalization 5. CC Deletion 6. Reduplication	bado/bottle      ka/cartefon/telephone asks/ask mud/mother op/stop      k/cats wawa/water      d du/thank you

Bennett (11/85: 9/87) Adapted from Hodson (1980); Ingram (1981); Shriber & Kwiatkowski (1981); Kahn (1982).

## PHONOLOGICAL PROCESSES

Phonological Process	Description	Example	Developmental Information
<b>A. Syllable Structure Processes</b>			
1. Deletion of Final Consonant	Reduction of CVC words or syllables to CV form, not usually sound specific	book → /b ð/	Children who are developing language normally will begin to include final consonants by age 3 <sup>1</sup> .
2. Cluster Reduction	Simplification of clusters of consonants usually by deleting the one that is most difficult to produce	tree → /ti/	Most children (90%) do not use cluster reduction after age 4. <sup>1</sup>
3. Weak Syllable Deletion	Deletion of unstressed syllables	telephone → /t fon/	Process does not exist in speech of normally developing children beyond age 4 <sup>1</sup>
4. Glottal Replacement	Replacement of final consonant of a syllable, usually in the intervocalic position, by a glottal stop; may mark the place of a consonant that is deleted.	kitchen → /kiʔən/	
<b>B. Harmony Processes</b>			
1. Labial Assimilation	Substitution of a labial phoneme for a non-labial phoneme due to influence of a dominant labial phoneme contained within the word	thum → /wʌm/	
2. Alveolar Assimilation	Substitution of a phoneme which is produced with alveolar placement for a non-alveolar phoneme due to influence of a dominant alveolar phoneme within the word	yellow → /lɛlo/	
3. Velar Assimilation	Substitution of a phoneme which is produced with velar placement for a non-velar phoneme due to influence of a dominant velar phoneme within the word	dog → /gɔg/	
4. Prevocalic Voicing	Substitution of a voiced stop for its voiceless cognate due to influence of the following vowel	pig → /big/	
5. Final Consonant Devoicing	Substitution of a voiceless stop for its voiced cognate due to influence of the silence following the word	bed → /bɛt/	Devoicing of final consonants does not occur after age 3 in normal phonological development <sup>1</sup>

Source: From *Speech and Language Services in Michigan: Suggestions for Identification, Delivery of Service and Exit Criteria*, edited by Elizabeth Loring Lockwood and Kathleen Pistano. East Lansing: the Michigan Speech-Language-Hearing Association 1991. Used with permission.

<sup>1</sup>Phonological Disability in Children cited by Linda M. Laila Khan. "A Review of 16 Major Phonological Processes." *Language, Speech, and Hearing Services in Schools*. (April 1982). pp. 77-85.



## PHONOLOGICAL PROCESSES

Phonological Process	Description	Example	Developmental Information
<b>C. Feature Contrast Processes</b> 1. Stopping	Substitution of a stop for a fricative	sun → /tʌŋ/	
2. Affrication	Substitution of affricatives for fricatives: usually occurs more often with sibilant fricatives than others	sun → /tsʌŋ/	Most fricatives should be correctly produced by age 4. <sup>1</sup>
3. Fronting	Substitution of phonemes by others which are produced anterior to the target phonemes; occurs commonly with velar stops	wago → /wɑdn/	Reported to no longer be evident by age 4 in normally developing children. <sup>1</sup>
4. Gliding of Fricatives	Substitution of glides for fricative phonemes	soap → /jɔp/	
5. Gliding of Liquids	Substitution of /w/, and /j/ for /l/ or /r/, simplification process	red → /wed/	Majority of children reported to produce correct liquids by age 4. <sup>1</sup>
6. Vocalization	Substitution of vowels for syllable consonants, most frequently /ʊ/ and /o/	table → /tebo/	Syllabics are usually acquired by age 4. <sup>1</sup>
7. Denasalization	Substitution of stops for nasals; usually affects word-initial and word-medial nasals more than word-final nasals	smoke → /bok/	

Source: From *Speech and Language Services in Michigan: Suggestions for Identification, Delivery of Service and Exit Criteria*, edited by Elizabeth Loring Lockwood and Kathleen Pistano. East Lansing: the Michigan Speech-Language-Hearing Association 1991. Used with permission.

<sup>1</sup>Phonological Disability in Children cited by Linda M. Laila Khan. "A Review of 16 Major Phonological Processes." *Language, Speech, and Hearing Services in Schools*. (April 1982). pp. 77-85.

*Natural Process Analysis*, cited by Linda M. Laila Khan, "A Review of 16 Major Phonological Processes." *Language, Speech, and Hearing Services in Schools*. (April 1982). pp. 77-85

# ASSESSING INTELLIGIBILITY WORKSHEET<sup>1</sup>

Name \_\_\_\_\_ Age \_\_\_\_\_ Date \_\_\_\_\_

Examiner \_\_\_\_\_

## Testing Situation

Stimuli (conversation, materials used, etc.) \_\_\_\_\_

Client's level of anxiety \_\_\_\_\_

Talkative/Not talkative \_\_\_\_\_

Prompts used \_\_\_\_\_

Representativeness of sample \_\_\_\_\_

## Instructions

1. Write out each word in each utterance (use phonetics if possible).
2. Use a dash (—) to indicate each unintelligible word.
3. An utterance is considered intelligible only if the entire utterance can be understood.
4. Calculate intelligibility for words and utterances.

### *Example:*

	#Intelligible Words	Total Words	#Intelligible Utterances	Total Utterances
1. hi w ε nt horn	3	3	1	1
2. ar ju – tu go	4	5	1	1
3. - - θm	1	3	0	1
4. pwiz pwe wrf mi	1	4	1	1
5. αr wənt to go hom	5	5	1	1
<b>Totals</b>	<b>14</b>	<b>20</b>	<b>4</b>	<b>5</b>
<u>Intelligible words:</u>	<u>14</u>	70%	<u>Intelligible utterances:</u>	<u>4</u> 80%
Total words:	20		Total utterances:	5

<sup>1</sup>Assessment in Speech-Language Pathology CD RUM, Singular Publishing Group

# ASSESSING INTELLIGIBILITY WORKSHEET

Utterances	#Intelligible Words	Total Words	#Intelligible Utterances	Total Utterances
1.				
2.				
3.				
4.				
5.				
6.				
7.				
8.				
9.				
10.				
11.				
12.				
13.				
14.				
15.				
16.				
17.				
18.				
19.				
20.				
21.				
22.				
23.				
24.				
25.				
26.				

## ASSESSING INTELLIGIBILITY WORKSHEET

Utterances	#Intelligible Words	Total Words	#Intelligible Utterances	Total Utterances
27.				
28.				
29.				
30.				
31.				
32.				
33.				
34.				
35.				
36.				
37.				
38.				
39.				
40.				
41.				
42.				
43.				
44.				
45.				
46.				
47.				
48.				
49.				
50.				
<b>TOTALS</b>	_____	_____	_____	_____

**FINDINGS**

Average # Words per Utterance \_\_\_\_\_

% Intelligibility: Words \_\_\_\_\_

% Intelligibility: Utterances \_\_\_\_\_

## STIMULABILITY WORKSHEETS

Name \_\_\_\_\_ School \_\_\_\_\_  
 Date \_\_\_\_\_ DOB/Age \_\_\_\_\_ / \_\_\_\_\_ Examiner \_\_\_\_\_

**Instructions:** Circle each sound checked for stimulability. Record results under the appropriate category using a check (✓) or plus (+) for success and zero (0) or minus (-) for failure. If a sound requires multiple stimulation, indicate this with an asterisk (\*) next to the plus or minus.

Sound Level	Syllable Level			Word Level			Word Level		
	I	M	F	I	M	F	I	M	F
p _____	—	—	—	—	—	—	—	—	—
b _____	—	—	—	—	—	—	—	—	—
t _____	—	—	—	—	—	—	—	—	—
d _____	—	—	—	—	—	—	—	—	—
k _____	—	—	—	—	—	—	—	—	—
g _____	—	—	—	—	—	—	—	—	—
f _____	—	—	—	—	—	—	—	—	—
v _____	—	—	—	—	—	—	—	—	—
θ _____	—	—	—	—	—	—	—	—	—
th _____	—	—	—	—	—	—	—	—	—
s _____	—	—	—	—	—	—	—	—	—
z _____	—	—	—	—	—	—	—	—	—
sh _____	—	—	—	—	—	—	—	—	—
zh _____	—	—	—	—	—	—	—	—	—
h _____	—	—	—	—	—	—	—	—	—
ch _____	—	—	—	—	—	—	—	—	—
j _____	—	—	—	—	—	—	—	—	—
w _____	—	—	—	—	—	—	—	—	—
y _____	—	—	—	—	—	—	—	—	—
l _____	—	—	—	—	—	—	—	—	—
r _____	—	—	—	—	—	—	—	—	—
m _____	—	—	—	—	—	—	—	—	—
n _____	—	—	—	—	—	—	—	—	—
ng _____	—	—	—	—	—	—	—	—	—

## WORDS AND PHRASES FOR ASSESSING STIMULABILITY

Age	Sound	Initial	Medial	Final
2	/p/	pin person pool Pie is good. Pete didn't go. Peggy is nice.	happy puppy soapy The hippo is big. What happened? It was a super effort.	sleep cup soup Let's move up. I found my cap. Get the soap.
2-8	/b/	bake bird boot Bill is very tall. Buy some milk. Bacon is good.	rabbit cupboard robin It's above the sink. The robber is quiet. The label was torn.	grab tub knob She has a robe. He needs a job. He hurt his rib.
2-8	/t/	tan touch tooth Tim went home. Taste this. Tony is nice.	guitar attend hotel The motel was full. No details are known. The cartoon is funny.	sat mutt got They were late. Here's the boot. It's a goat.
2-4	/d/	dim dump duty Do they know? Debbie went home. Dive right in.	ladder muddy soda He's hiding in there. The radio was loud. The wedding is fun.	need word food It's too loud. Plant a seed. She has a braid.
2-4	/k/	cat cup call Can I help you? Cake tastes good. Cut it out.	bacon bucket rocket He's making a mess. The pocket is full. He's looking for her.	music truck look He saw a duck. It is black. They like steak.
2-4	/g/	give gum ghost Go away. Get some more. Good job.	tiger again soggy Read the magazine. The sugar is sweet. It is foggy outside.	fig rug dog He found a frog. Sit on the rug. They like to dig.
2-4	/f/	fish fun fall Find the other one. Feel this paper. Food is good.	safety muffin coffee Go before dinner. It was safer inside. The café was full.	stiff rough goof Slice the loaf. Don't laugh. He likes beef.

## WORDS AND PHRASES FOR ASSESSING STIMULABILITY

Age	Sound	Initial	Medial	Final
4	/v/	vase verdict vote Visit him. Value your time. Victory is sweet.	beaver oven over The movie was good. It's a heavy box. It's in the oval office.	have curve stove They will arrive. He wore a glove. He might move.
4	/θ/	thin third thought Think about it. Thank you. Thunder is loud.	bathtub nothing author The athlete won. Say something. The cathedral is big.	math earth tooth I need a bath. It's a myth. Tell the truth.
4	/ð/	that there those These are old. They didn't like it. This is not right.	feather mother bother I would rather go. The weather is hot. Her father is nice.	breathe bathe soothe He can breathe. It feels smooth. We sunbathe.
3	/s/	sand sunny soap Sip lemonade. Surprises are fun. Soup is good.	hassle mercy bossy Leave a message. They saw a castle. They are chasing us.	chase fuss moose It's a mess. She has a horse. His dog is loose.
4	/z/	zip zero zone Zip the coat. Zoo trips are fun. Zebras are big.	easy cousin closet They will visit us. The closet was full. The dessert was good.	peas does chose Touch the toes. He likes cheese. Hear the noise.
3-8	/ʃ/	ship shirt show Shall we go? Shoes get lost. Shells are pretty.	special brushes bushy The dishes are dry. The ocean is near. The machine broke.	fish rush push He used cash. It is fresh. Make a wish.
4	/ʒ/		measure version fusion Bury the treasure. Wear casual clothes. His vision is good.	

## WORDS AND PHRASES FOR ASSESSING STIMULABILITY

Page 3 of 6

Age	Sound	Initial	Medial	Final
2	/h/	hiss hut hop Hurry for dinner. He is going. Have you done it?	behave rehearse forehead The playhouse is large. Go unhook it. Look behind you.	
3-8	/tʃ/	cheese chunk choose China is far away. Chuck is a friend. Chew your food.	matches merchant nachos The ketchup spilled. He is pitching. He's a natural.	beach much watch Sit on a couch. Strike a match. She ate a peach.
4	/dʒ/	jeep jug joke Jets are fast. Jump the fence. Jelly is good.	magic budget project The pigeon flew. The pajamas are red. It was raging fire.	age budget dodge Turn the page. Cross the bridge. She likes fudge.
2-8	/w/	well won wood Winter is here. Wake up now. Why did he do it?	freeway away mower The sidewalk is hot. The reward was paid. He has a power saw.	
2-4	/j/	yell yummy yacht Yellow is bright. Yogurt is good. You can now.	kayak royal coyote The tortilla was warm. He is a loyal friend. The lawyer called.	
3-4	/l/	leap learn loop Linda went home. Lay it on the table. Let me see.	jelly color pillow She is silly. The palace was large. The jello was good.	fell pearl ball It is full. We will. Walk a mile.



## WORDS AND PHRASES FOR ASSESSING STIMULABILITY

Age	Sound	Initial	Medial	Final
3-4	/r/	rip run row Rake the leaves. Rub it in. Ruth is nice.	erase carrot borrow The parade is today. He is sorry about it. Her earring was lost.	steer hair car It was not far. He ate the pear. Go to the store.
2	/m/	make money moon Meet me later. Mark is nice. My dog is brown.	hammer summer human It's lemon pie. He's coming back. Let Jimmy see it.	same hum boom You are welcome. Play the drum. They like ham.
2	/n/	net nothing new Never do that. Nancy said yes. Nobody was home.	many sonny phony He's a piano player. We cannot go. The bunny is white.	mean learn soon David is his son. Did you win? She has grown.
2	/ŋ/		finger hungry longer The singer is short. Put the hanger away. It's a jungle animal.	ring hung song He was young. He was wrong. Play on a swing.
<b>Blend</b>		<b>Word</b>	<b>Phrase</b>	
/bl/		black blunt blue	a black shoe a blunt pencil a blue car	
/br/		brave brush broke	the brave hero The brush fell. He broke it.	
/dr/		drink drum draw	Don't drink it all. the drum beat Let's draw a picture.	
/fr/		free front frog	set free in the front a big frog	

## WORDS AND PHRASES FOR ASSESSING STIMULABILITY

Page 5 of 6

Blend	Word	Phrase
/fl/	fly flurry float	a fly swatter the snow flurry a root beer float
/gl/	glad glow glue	a glad boy a glove box sticky as glue
/gr/	green grudge grow	the green tree hold a grudge They grow corn.
/kl/	clam club closet	a clam bake the club house the closet door
/kr/	cry crumb cruise	Do not cry. the crumb cake the cruise liner
/pl/	place plum plot	first-place ribbon plum pudding The plot thickens.
/pr/	price protect prove	The price was high. He will protect us. Can you prove it?
/sk/	sky scare scoop	The sky is blue. Don't scare me. a scoop of ice cream
/skr/	screen scrub scroll	a screen door He will scrub the sink. the scroll cards
/sl/	slam slush slow	a slam dunk The snow was slush. She should slow down.
/sp/	spy spurt spoon	the secret spy a spurt of energy a soup spoon
/spl/	split splurge splotch	a banana split They splurged for it. a splotch of ink

## WORDS AND PHRASES FOR ASSESSING STIMULABILITY

Page 6 of 6

<b>Blend</b>	<b>Word</b>	<b>Phrase</b>
/spr/	spray sprung sprout	a spray bottle They sprung up. an alfalfa sprout
/sm/	smell smug smooth	a nice smell a smug look baby-smooth skin
/sn/	snack snuggle snow	The snack was good. a snuggle bear the snow shovel
/st/	stiff stunt stop	a stiff shirt a tricky stunt Don't stop yet.
/str/	stray struggle strong	a stray dog a struggle to win a strong man
/ʃr/	shrimp shrunk shrewd	The shrimp was large. It shrunk in the wash. He was shrewd.
/tr/	tray trumpet true	the breakfast tray a trumpet solo her true colors
/θr/	three thrust throw	the three blind mice the initial thrust Let's throw the ball.

Stimulability Worksheets

## CHARACTERISTICS OF APRAXIA OF SPEECH<sup>1</sup>

- The number of misarticulations increases as the complexity of the speech task increases.
- Misarticulations occur on both consonants and vowels. Articulation errors occur more frequently on consonant clusters than on singletons. Vowels are misarticulated less frequently than consonants.
- Sounds in the initial position are affected more often than sounds in the medial or final positions.
- The frequency of specific sound errors is related, at least in part, to the frequency of occurrence in speech. More errors are noted with less frequently occurring sounds.
- Sound substitutions, omissions, distortions, and additions are all observed. The most frequent misarticulations are substitutions and omissions.
- Articulation errors and struggle behaviors increase as the length and complexity of the target word, phrase, or sentence increases.
- Speech production is variable. It is common for a person with apraxia of speech to produce a sound, syllable, word, or phrase correctly on one occasion and then incorrectly on another. It is also common to observe several different misarticulations for the same target sound.
- Struggling behaviors (such as groping to position the articulators correctly) are observed in many patients with apraxia of speech.
- Automatic speech activities (such as counting to 10 or naming the days of the week) tend to be easier and more error-free than volitional speech. Reactive speech (such as “thank you” or “I’m fine”) is also easier for students with apraxia of speech to produce.
- Metathetic errors (errors of sound or syllable transposition) are common. For example, the student may say *snapknack* for *knapsack* or *guspetti* for *spaghetti*.

---

<sup>1</sup> Darley (1982); Darley, Aronson, and Brown (1975); Duffy (1995); Haynes (1985); Rosenbek (1985); Rosenbek, Kent, and LaPointe (1984); Shipley, Recor, and Nakamura (1990). Assessment in Speech-Language Pathology CD ROM Copyright © 1998 by Singular Publishing Group.

- “Syllable collapses” may occur. Syllable collapses are not commonly reported in the literature, but are a common characteristic. The student reduces and/or disrupts the number of syllables in motorically complex words or phrases. For example, a student might say *glost gers* for *Los Angeles Dodgers* or *be neers* for *Tampa Bay Buccaneers*. In both examples, the number of syllables is collapsed and the remaining syllables are inaccurately produced.
- Receptive language abilities are often, but not always, superior to expressive abilities. However, the language skills are separate from the apraxia.
- People with apraxia of speech are usually aware of their incorrect articulatory productions. Therefore, they may be able to identify many of their own correct and incorrect productions without feedback from the Speech-Language Therapist.
- Apraxia of speech can occur in isolation or in combination with other communicative disorders such as dysarthria, delayed speech or language development, aphasia, and/or hearing loss.
- Oral apraxia and/or limb apraxia may or may not be present with apraxia of speech. Frequently an individual with oral apraxia will also have apraxia of speech.
- Severity varies from student to student. Some students cannot volitionally produce a target vowel such as /a/, and others exhibit speech that is fine until they attempt to produce motorically challenging phrases such as *statistical analysis* or *theoretical implications*.

## IDENTIFYING APRAXIA OF SPEECH<sup>1</sup>

Name: \_\_\_\_\_ Age: \_\_\_\_\_ Date: \_\_\_\_\_ Examiner: \_\_\_\_\_

**Instructions:** Evaluate each behavior in automatic speech, spontaneous speech, and oral reading. Mark a plus (+) if the child has no difficulty. Use the severity scale if the child does exhibit problems with production. Add comments on the right-hand side as needed.

- 1 = mild difficulties  
 2 = moderate difficulties  
 3 = severe difficulties

Automatic Speech	Oral Reading	Spontaneous Speech	Comments
			• phonemic anticipatory errors (e.g., <i>kreen crayon</i> for <i>green crayon</i> ) _____
			• phonemic perseveratory errors (e.g., <i>babyb</i> for <i>baby</i> ) _____
			• phonemic transposition errors (e.g., <i>snapknack</i> for <i>knapsack</i> ) _____
			• phonemic vowel errors (e.g., <i>Paul</i> for <i>ball</i> ) _____
			• phonemic vowel errors (e.g., <i>might</i> for <i>meet</i> ) _____
			• visible or audible search _____
			• numerous and varied off-target attempts _____
			• highly inconsistent errors _____
			• errors increase with phonemic complexity _____
			• fewer errors in automatic speech _____
			• marked difficulties initiating speech _____
			• intrudes a schwa sound /□/ _____
			• abnormal prosodic features _____
			• awareness of errors with reduced ability _____
			• receptive-expressive language gap _____

<sup>1</sup> Adapted from B. Dabul, *Apraxia Battery for Adults*. Austin, TX: PRO-ED. Copyright © 1986 and used by permission.  
 Assessment in Speech-Language Pathology CD ROM, 1998 Singular Publishing Group  
 ED -4075 / 2003: Speech: Sound Production Resource Packet  
 Department of Education

# CHECKLISTS FOR LIMB, ORAL, & VERBAL APRAXIA<sup>1</sup>

Name: \_\_\_\_\_ Age: \_\_\_\_\_ Date: \_\_\_\_\_

Examiner: \_\_\_\_\_

**Instructions:** Select several items from each section and ask the student to complete the task or repeat the utterance. Many items are provided to offer a wide range of tasks; you do not need to complete each item. Score each presented item as correct (+ or ✓) or incorrect (– or Ø). Transcribe errors phonetically on the right-hand side. Also note accompanying behaviors such as delays with initiation, struggling, groping, or facial grimacing. The diagnosis of apraxia is made by evaluating the nature and accuracy of movement, as well as the type and severity of error patterns present.

## Limb Apraxia

## Comments

- \_\_\_\_\_ wave hello or goodbye \_\_\_\_\_
- \_\_\_\_\_ make a fist \_\_\_\_\_
- \_\_\_\_\_ make the “thumbs up” sign \_\_\_\_\_
- \_\_\_\_\_ make the “okay” sign \_\_\_\_\_
- \_\_\_\_\_ pretend you’re zipping your coat \_\_\_\_\_
- \_\_\_\_\_ pretend you’re combing your hair \_\_\_\_\_
- \_\_\_\_\_ pretend you’re petting a dog \_\_\_\_\_
- \_\_\_\_\_ pretend you’re turning a doorknob \_\_\_\_\_
- \_\_\_\_\_ pretend you’re hitting a baseball (or golf ball) \_\_\_\_\_
- \_\_\_\_\_ pretend you’re tying a shoe \_\_\_\_\_
- \_\_\_\_\_ pretend you’re using scissors to cut a piece of paper \_\_\_\_\_
- \_\_\_\_\_ pretend you’re knocking on the door \_\_\_\_\_
- \_\_\_\_\_ pretend you’re writing \_\_\_\_\_
- \_\_\_\_\_ pretend you are going to make a fire \_\_\_\_\_
- \_\_\_\_\_ pretend you are going to make coffee \_\_\_\_\_
- \_\_\_\_\_ pretend you are going to drive a car out of a driveway \_\_\_\_\_

## Oral Apraxia

## Comments

- \_\_\_\_\_ smile \_\_\_\_\_
- \_\_\_\_\_ open your mouth \_\_\_\_\_
- \_\_\_\_\_ blow \_\_\_\_\_
- \_\_\_\_\_ whistle \_\_\_\_\_

<sup>1</sup>Duffy (1995), Darley, Aronson, and Brown (1975). CD ROM, 1998 by Singular Publishing Group.

- \_\_\_\_\_ puff out your cheeks \_\_\_\_\_
- \_\_\_\_\_ show me your teeth \_\_\_\_\_
- \_\_\_\_\_ chatter your teeth as if you are cold \_\_\_\_\_
- \_\_\_\_\_ pucker your lips \_\_\_\_\_
- \_\_\_\_\_ bite your lower lip \_\_\_\_\_
- \_\_\_\_\_ smack your lips \_\_\_\_\_
- \_\_\_\_\_ lick your lips \_\_\_\_\_
- \_\_\_\_\_ stick out your tongue \_\_\_\_\_
- \_\_\_\_\_ touch your nose with the tip of your tongue \_\_\_\_\_
- \_\_\_\_\_ move your tongue in and out \_\_\_\_\_
- \_\_\_\_\_ wiggle your tongue from side to side \_\_\_\_\_
- \_\_\_\_\_ click your tongue \_\_\_\_\_
- \_\_\_\_\_ clear your throat \_\_\_\_\_
- \_\_\_\_\_ cough \_\_\_\_\_
- \_\_\_\_\_ alternately pucker and smile \_\_\_\_\_

**Verbal Apraxia**

**Comments or Transcription**

- \_\_\_\_\_ love—loving—lovingly \_\_\_\_\_
- \_\_\_\_\_ jab—jabber--jabbering \_\_\_\_\_
- \_\_\_\_\_ zip—zipper—zippering \_\_\_\_\_
- \_\_\_\_\_ soft—soften—softening \_\_\_\_\_
- \_\_\_\_\_ hope—hopeful—hopefully \_\_\_\_\_
- \_\_\_\_\_ hard—harden—hardening \_\_\_\_\_
- \_\_\_\_\_ thick—thicken—thickening \_\_\_\_\_
- \_\_\_\_\_ please—pleasing—pleasingly \_\_\_\_\_
- \_\_\_\_\_ sit—city—citizen—citizenship \_\_\_\_\_
- \_\_\_\_\_ cat—catnip—catapult—catastrophe \_\_\_\_\_
- \_\_\_\_\_ strength—strengthen—strengthening \_\_\_\_\_
- \_\_\_\_\_ door—doorknob—doorkeeper—dormitory \_\_\_\_\_
- \_\_\_\_\_ tornado \_\_\_\_\_
- \_\_\_\_\_ radiator \_\_\_\_\_
- \_\_\_\_\_ artillery \_\_\_\_\_
- \_\_\_\_\_ linoleum \_\_\_\_\_
- \_\_\_\_\_ inevitable \_\_\_\_\_
- \_\_\_\_\_ delegation \_\_\_\_\_
- \_\_\_\_\_ probability \_\_\_\_\_
- \_\_\_\_\_ cauliflower \_\_\_\_\_
- \_\_\_\_\_ declaration \_\_\_\_\_
- \_\_\_\_\_ refrigeration \_\_\_\_\_
- \_\_\_\_\_ unequivocally \_\_\_\_\_
- \_\_\_\_\_ thermometer \_\_\_\_\_
- \_\_\_\_\_ parliamentarian \_\_\_\_\_



**Verbal Apraxia**

**Comments or Transcription**

_____ catastrophically _____	
_____ disenfranchised _____	
_____ statistical analysis _____	
_____ alternative opinion _____	
_____ regulatory authority _____	
_____ ruthlessly malicious _____	
_____ barometric pressure _____	
_____ indescribably delicious _____	
_____ Mississippi River _____	
_____ Tallahassee, Florida _____	
_____ Kalamazoo, Michigan _____	
_____ Boston, Massachusetts _____	
_____ Sacramento, California _____	
_____ Madison Square Garden _____	
_____ Minneapolis, Minnesota _____	
_____ Chattanooga, Tennessee _____	
_____ Encyclopedia Britannica _____	
_____ Saskatchewan, Saskatoon _____	
_____ Philadelphia, Pennsylvania _____	
_____ Oakland-Alameda Coliseum _____	
_____ Vancouver, British Columbia _____	
_____ Nuclear Regulatory Commission _____	

# DIFFERENTIAL CHARACTERISTICS OF DYSARTHRIA AND APRAXIA OF SPEECH<sup>1</sup>

Page 1 of 2

## ***Dysarthria:***

- All processes of speech are affected (including respiration, phonation, resonance, articulation and prosody).
- There is a change in muscle tone secondary to neurologic involvement that results in difficulty with voluntary and involuntary motor tasks (such as swallowing, chewing, and licking).
- Speech errors result from a disruption in muscular control of the central and/or peripheral nervous system.
- Errors of speech are consistent and predictable. There are no islands of clear speech.
- Articulatory errors are primarily distortions and omissions.

## ***Apraxia of Speech:***

- The speech process for articulation is primarily affected. Prosody may also be abnormal.
- There is a change in motor programming for speech secondary to neurologic involvement, but muscle tone is not affected. Involuntary motor tasks typically are not affected.
- Speech errors result from a disruption of the message from the motor cortex to the oral musculature.
- Errors of speech are inconsistent and unpredictable. Islands of clear, well-articulated speech exist.
- Articulatory errors are primarily substitutions, repetitions, additions, transpositions, prolongations, omissions, and distortions (which are least common). Most errors are close approximations of the targeted phoneme. Errors are often perseveratory or anticipatory.

Assessments in Speech-Language Pathology CD ROM 1998 by S

Differential Characteristics: Dysarthria and Apraxia of Speech

---

<sup>1</sup> Durley, Aronson, and Brown (1975), LaPointe and Wentz (1974), Weiss, Gordon, and Lillywhite (1987), and Wertz, LaPointe, and Rosenbek (1991)

**Dysarthria:**

- Consonant productions are consistently imprecise; vowels may be neutralized.
  
- The speech rate is slow and labored: strain, tension, and poor breath support may be apparent.
  
- Speech intelligibility is reduced as the speaking rate increases.
  
- Increases in word/phrase complexity result in poorer articulatory performance.

**Apraxia of Speech:**

- Consonants are more difficult than vowels; blends are more difficult than singletons; initial consonants are more difficult than final consonants; fricatives and affricates are the most difficult consonants. Errors increase as the complexity of the motor pattern increases.
  
- A prosodic disorder may occur as a result of compensatory behaviors (stopping, restarting, and difficulty initiating phonation and/or correct articulatory postures).
  
- Speech intelligibility sometimes increases as the speaking rate increases.
  
- Increases in word/phrase complexity result in poorer articulatory performance.

# IDENTIFYING DYSARTHRIA<sup>1</sup>

Page 1 of 2

Name: \_\_\_\_\_ Age: \_\_\_\_\_ Date: \_\_\_\_\_

Examiner: \_\_\_\_\_

**Instructions:** Identify the speech characteristics noted during the speech sample.

## **Flaccid Dysarthria** (lower motor neuron involvement)

- \_\_\_\_\_ Hypernasality
- \_\_\_\_\_ Imprecise consonants
- \_\_\_\_\_ Breathiness
- \_\_\_\_\_ Monopitch
- \_\_\_\_\_ Nasal emission

## **Spastic Dysarthria** (upper motor neuron involvement)

- \_\_\_\_\_ Imprecise consonants
- \_\_\_\_\_ Monopitch
- \_\_\_\_\_ Harsh voice quality
- \_\_\_\_\_ Monoloudness
- \_\_\_\_\_ Low pitch
- \_\_\_\_\_ Slow rate
- \_\_\_\_\_ Hypernasality
- \_\_\_\_\_ Strained-strangled voice quality
- \_\_\_\_\_ Short phrases

## **Mixed Dysarthria** (upper and lower motor neuron involvement)

- \_\_\_\_\_ Imprecise consonants
- \_\_\_\_\_ Hypernasality
- \_\_\_\_\_ Harsh voice quality

\_\_\_\_\_

<sup>1</sup>From J. C. Rosenbek and L. L. LaPointe, "The Dysarthrias: Diagnosis, Description, and Treatment." In D. F. Johns (Ed.), *Clinical Management of Neurogenic Communication Disorders* (2<sup>nd</sup> ed., p. 100). Boston: Little, Brown and Co.

## IDENTIFYING DYSARTHRIA

Page 2 of 2

- \_\_\_\_\_ Slow rate
- \_\_\_\_\_ Monopitch
- \_\_\_\_\_ Short phrases
- \_\_\_\_\_ Distorted vowels
- \_\_\_\_\_ Low pitch
- \_\_\_\_\_ Monoloudness
- \_\_\_\_\_ Excess and equal stress
- \_\_\_\_\_ Prolonged intervals

### **Ataxic Dysarthria** (cerebellar involvement)

- \_\_\_\_\_ Imprecise consonants
- \_\_\_\_\_ Excess and equal stress
- \_\_\_\_\_ Irregular articulatory breakdowns
- \_\_\_\_\_ Distorted vowels
- \_\_\_\_\_ Harsh voice
- \_\_\_\_\_ Loudness control problems
- \_\_\_\_\_ Variable nasality

### **Hypokinetic Dysarthria** (Parkinsonism)

- \_\_\_\_\_ Monopitch
- \_\_\_\_\_ Reduced stress
- \_\_\_\_\_ Monoloudness
- \_\_\_\_\_ Imprecise consonants
- \_\_\_\_\_ Inappropriate silences
- \_\_\_\_\_ Short rushes of speech
- \_\_\_\_\_ Harsh voice
- \_\_\_\_\_ Breathy voice

### **Hyperkinetic Dysarthria** (Dystonia and Choreathetosis)

- \_\_\_\_\_ Imprecise consonants
- \_\_\_\_\_ Distorted vowels

Identifying Dysarthria

## DIFFERENTIATING THE SIX DYSARTHRIAS<sup>1</sup>

Primary Type	Cite of Lesion	Possible Causes	Speech Characteristics
Flaccid	Lower motor neuron	Viral infection Tumor CVA Congenital condition Disease Palsies Trauma	Hypernasality Imprecise consonants Breathiness Monopitch Nasal emissions
Spastic	Upper motor neuron	CVA Tumor Trauma Congenital condition	Imprecise Consonants Monopitch Harsh voice quality Monoloudness Low pitch Slow rate Hypernasality Strained-strangled voice Short phrases
Mixed (flaccid and spastic)	Upper and lower motor neuron	Amyotrophic lateral Sclerosis Trauma CVA	Imprecise consonants Hypernasality Harsh voice quality Slow rate Monopitch Short phrases Distorted vowels Low pitch Monoloudness Excess and equal stress Prolonged intervals
Ataxic	Cerebellar system	CVA Tumor Trauma Congenital condition Infection Toxic effects Loudness/control problems	Imprecise consonants Excess and equal stress Irregular articulatory breakdowns Distorted vowels Harsh voice Variable nasality
Hypokinetic	Extra pyramidal system	Parkinsonism Drug-induced	Monopitch Reduced stress Monoloudness Imprecise consonants Inappropriate silences Short ruses of speech Harsh voice Breathy voice
Hyperkinetic	Extrapyramidal system	Chorea Infection Gilles de la Tourette Syndrome Balism Anthetosis Infection CVA Tumor Dystonia Drug-induced Dyskinesia	Imprecise consonants Distorted vowels Harsh voice quality Irregular articulatory breakdowns Strained-strangled voice Monopitch Monoloudness

Differentiating the Six Dysarthrias

<sup>1</sup> Information is based on materials presented in Darley, Aronson, and Brown (1975). This table is from R.T. Wertz, "Neurophysiology of Speech and Language: An Introduction to Patient Management." In D.F. Johns (Ed.), *Clinical Management of Neurogenic Communication Disorders* (2nd ed., pp. 76-77). Boston: Little, Brown and Co.

# CHECKLIST FOR THE ASSESSMENT OF CHILDREN WITH CLEFTS<sup>1</sup>

Name: \_\_\_\_\_ Age: \_\_\_\_\_ Date: \_\_\_\_\_

Primary care physician: \_\_\_\_\_

Type of cleft: \_\_\_\_\_

Date of surgery: \_\_\_\_\_

Other conditions and medical history: \_\_\_\_\_

\_\_\_\_\_

\_\_\_\_\_

Examiner: \_\_\_\_\_

## Oral-Facial Examination

**Instructions:** Administer a standard oral-facial examination. Additionally, make observations about the following oral-facial features. Check and circle each item noted. Include descriptive comments in the right-hand margin

### Comments

\_\_\_\_\_ Type of cleft: lip/palate/lip and palate (describe) \_\_\_\_\_

\_\_\_\_\_ Adequacy of cleft repair: good/fair/poor \_\_\_\_\_

\_\_\_\_\_ Other facial abnormalities: absent/present (describe) \_\_\_\_\_

\_\_\_\_\_ Submucosal cleft: absent/present \_\_\_\_\_

\_\_\_\_\_ Labial pits in lower lip: absent/present \_\_\_\_\_

\_\_\_\_\_ Labiodental fistulas: absent/present \_\_\_\_\_

\_\_\_\_\_ Alveolar fistulas: absent/present \_\_\_\_\_

\_\_\_\_\_ Palatal fistulas: absent/present \_\_\_\_\_

\_\_\_\_\_ Velar fistulas: absent/present \_\_\_\_\_

\_\_\_\_\_ Perceived length of velum: normal/short/long \_\_\_\_\_

\_\_\_\_\_ Shape of the alveolar ridge: notched/cleft/wide/collapsed \_\_\_\_\_

Notes from standard oral-facial examination \_\_\_\_\_

\_\_\_\_\_

\_\_\_\_\_

\_\_\_\_\_

\_\_\_\_\_

\_\_\_\_\_

<sup>1</sup> Assessment in Speech-Language Pathology. Singular Publishing Group

# CHECKLIST FOR THE ASSESSMENT OF CHILDREN WITH CLEFTS

(Continued-pg.2)

## Assessment of Voice

**Instructions:** Evaluate the child's voice, paying particular attention to possible cleft-related problems. Check deficits that are present and indicate severity. Record additional notes in the right-hand margin.

- 1. = mild
- 2. = moderate
- 3. = severe

### Comments

\_\_\_\_\_ Pitch variation is reduced. \_\_\_\_\_

\_\_\_\_\_ Vocal intensity is reduced. \_\_\_\_\_

\_\_\_\_\_ Vocal quality is hoarse/harsh/breathy (circle). \_\_\_\_\_

\_\_\_\_\_ Vocal quality is strangled. \_\_\_\_\_

\_\_\_\_\_ Child produces glottal stops in place of plosives and fricatives. \_\_\_\_\_

\_\_\_\_\_ Child attempts to mask hypernasality and nasal emission. \_\_\_\_\_

\_\_\_\_\_ Child strains voice to achieve adequate pitch change and loudness. \_\_\_\_\_

\_\_\_\_\_ Child strains voice in attempt to increase speech intelligibility. \_\_\_\_\_

## Assessment of Resonance and Velopharyngeal Integrity

**Instructions:** Evaluate the child's voice, listening for the following qualities of resonance. Check each characteristic the child exhibits and indicate severity. Record additional notes in the right-hand margin.

- 1 = mild
- 2 = moderate
- 3 = severe

### Comments

\_\_\_\_\_ Hypernasality \_\_\_\_\_

\_\_\_\_\_ Nasal emission \_\_\_\_\_

\_\_\_\_\_ Cul-de-sac resonance \_\_\_\_\_

\_\_\_\_\_ Hyponasality \_\_\_\_\_



# CHECKLIST FOR THE ASSESSMENT OF CHILDREN WITH CLEFTS

(Continued-pg.3)

**Instructions:** Instruct the child to complete the Modified Tongue Anchor Procedure. Check your observation below:

- \_\_\_\_\_ Velopharyngeal function is adequate (no nasal omission).
- \_\_\_\_\_ Velopharyngeal function is adequate (nasal emission present).
- \_\_\_\_\_ Further testing using objective instrumentation is necessary.

**Instructions:** Ask the child to produce the pressure /p/, /b/, /k/, /g/, /t/, /d/, /f/, /v/, /s/, /z/, /ʃ/, /ʒ/, /tʃ/, /θ/, and / ð / (see *The Pressure Consonants* for suggested stimulus words and phrases), and listen for hypernasality and nasal emissions. Check the appropriate observations below.

- \_\_\_\_\_ Velopharyngeal function is adequate (no nasal emissions or hypernasality).
- \_\_\_\_\_ Velopharyngeal function is inadequate (nasal emissions or hypernasality present).
- \_\_\_\_\_ Further testing using objective instrumentation is necessary.
- \_\_\_\_\_ Nasal emissions and hypernasality are consistent.
- \_\_\_\_\_ Nasal emissions and hypernasality are inconsistent.

## Assessment of Articulation and Phonology

**Instructions:** Listen to the child's articulatory accuracy. Pay particular attention to the child's production of stop-plosives, fricatives, and affricates, which are most likely to be negatively affected by a cleft. Indicate severity and make additional comments in the right-hand margin.

- 1. = mild
- 2. = moderate
- 3. = severe

### Comments

- \_\_\_\_\_ Stop-plosive errors \_\_\_\_\_
- \_\_\_\_\_ Fricative errors \_\_\_\_\_
- \_\_\_\_\_ Affricate errors \_\_\_\_\_
- \_\_\_\_\_ Glide errors \_\_\_\_\_
- \_\_\_\_\_ Liquid errors \_\_\_\_\_
- \_\_\_\_\_ Nasal errors \_\_\_\_\_
- \_\_\_\_\_ Vowel errors \_\_\_\_\_
- \_\_\_\_\_ Error patterns are consistent \_\_\_\_\_
- \_\_\_\_\_ Error patterns are inconsistent \_\_\_\_\_
  
- \_\_\_\_\_ **Further assessment is recommended** \_\_\_\_\_

**CHECKLIST FOR THE ASSESSMENT OF CHILDREN WITH CLEFTS**

*(Continued-pg.4)*

**Instructions:** Check the following compensatory strategies the child uses during speech production and indicate severity. Make additional comments in the right-hand margin.

- \_\_\_\_\_ Glottal stops \_\_\_\_\_
- \_\_\_\_\_ Pharyngeal stops \_\_\_\_\_
- \_\_\_\_\_ Mid-dorsum palatal stops \_\_\_\_\_
- \_\_\_\_\_ Pharyngeal fricatives \_\_\_\_\_
- \_\_\_\_\_ Velar fricatives \_\_\_\_\_
- \_\_\_\_\_ Nasal fricatives \_\_\_\_\_
- \_\_\_\_\_ Posterior nasal fricatives \_\_\_\_\_
- \_\_\_\_\_ Nasal grimaces \_\_\_\_\_

**Summary**

**Instructions:** Check areas that require further assessment. Make additional comments in the right-hand margin.

- |  | <b>Comments</b> |
|--|-----------------|
| _____ Articulation—Cleft-related _____     |                 |
| _____ Articulation—Non-cleft-related _____ |                 |
| _____ Cognition _____                      |                 |
| _____ Hearing _____                        |                 |
| _____ Language _____                       |                 |
| _____ Velopharyngeal integrity _____       |                 |
| _____ Voice _____                          |                 |